



5  
Year Warranty



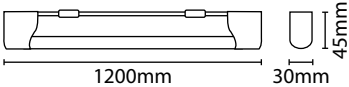
Double  
Insulated



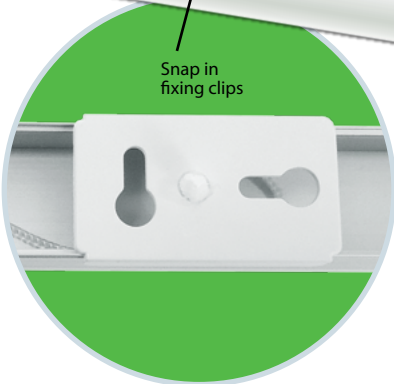
LED BATTEN

Perfect for new ceiling installations  
& under cabinet lighting

- Polycarbonate and aluminium construction
- 80 lm/W
- Low energy alternative to a standard fluorescent batten
- Ultra-bright LEDs: low power consumption with enhanced life expectancy
- Slim design: offers a more stylish and modern solution to traditional battens
- Snap in fixing clips: easy installation



Code	Length	Wattage	Colour Temp.	Lumens	Avg. Rated Life (Hrs)	IP Rating	MOM / OPQ
T8LED20	1200mm / 4ft	20W	4000K	1600 lm	20,000 hrs	IP20	1 / 20



LAMP SPECIFICATIONS:	T8LED20
Lumens total flux	1600 lm
Rated Wattage	20W
Rated luminous flux	1600 lm
Nominal life time of the lamp	20,000 hrs
Colour temperature	4000K
Number of switching cycles before premature lamp failure	≥15,000
Warm-up time up to 60 % of the full light output	Instant full light
Dimmable	No
Lamp dimensions (L)	1200mm
Rated power	20W
Rated lamp lifetime	20,000 hrs
Lamp power factor	0.85
Lumen maintenance factor at end of nominal life	>70%
Starting time	Instant full light
Colour rendering	>80
Colour consistency	Within 6 step Macadam ellipse
Rated beam angle	180°
Voltage	240V